

MARCOPOLO  
AUCTIONS MILANO



## Asian Interiors

Milan, 23 June 2026



# Asian Interiors

23 June 2026, Milan

# Asian Interiors

23 June 2026 – 15:00 CET

## EXHIBITION

|                                 |                         |
|---------------------------------|-------------------------|
| Thursday 18 June<br>10.00-18.00 | 6月18日星期四<br>10.00-18.00 |
| Friday 19 June<br>10.00-18.00   | 6月19日星期五<br>10.00-18.00 |
| Saturday 20 June<br>10.00-18.00 | 6月20日星期六<br>10.00-18.00 |
| Sunday 21 June<br>10.00-18.00   | 6月21日星期日<br>10.00-18.00 |

## CONDITION OF LOTS

Potential buyers are encouraged to inspect the objects during pre-sale exhibitions. For information only, Marcopolo Asian Art can provide a condition report. The absence of references to the condition of a lot in the catalogue description does not imply that the lot is free of defects or imperfections. Please refer to condition 4 of the General Conditions of Sale.

### 拍品状况

拍卖行郑重建议准买家于拍卖进行之前亲自检查及鉴定其有兴趣竞投之物品。Marcopolo Asian Art 可以提供状况报告，仅作为一种参考。目录描述中没有提及批次的条件并不意味着该批次没有缺陷或缺陷。请参阅本目录中印刷的一般销售条件的条件 4。

# Contacts

**Davide Salvatore Chiara**  
Chief Executive Officer  
ds.chiara@marcopoloauctions.com

**Min Zhou**  
Asia Market Development  
m.zhou@marcopoloauctions.com

**Oriana Focaraccio**  
Back Office  
info@marcopoloauctions.com

**Matteo Catozzi**  
Back Office

**Carlo Santi**  
Asian Art Director | Business Development  
c.santi@marcopoloauctions.com

**Manfredi Rovella**  
Business Development  
m.rovella@marcopoloauctions.com

**Giulia Domeniconi**  
Operations

For condition report  
conditionreport@marcopoloauctions.com

## CATALOGUE

**Matias Reyes**  
Graphic Designer | Webmaster  
m.reyes@graphics.marcopoloauctions.com

**Alice Turchini**  
Photographer

---

**Marcopolo Auctions**  
Via Carlo Poerio, 43 20129 Milan, Italy  
Tel +39 333 90 14 547  
+39 02 87 165 778  
www.marcopoloauctions.com

# Departments

## CHINESE ART

info@chinese.marcopoloauctions.com

### Carlo Santi

Head of the Chinese Art Department

c.santi@marcopoloauctions.com

### William Arthur Martindale

Senior Specialist

Chinese Jades and Stone Carvings

### Filippo Comisi

Senior Specialist

Himalayan Art

---

## JAPANESE ART

info@japanese.marcopoloauctions.com

### Carlo Santi

Head of the Japanese Art Department

---

## INDIAN AND SOUTH EAST ASIAN ART

info@indian.marcopoloauctions.com

### Renzo Freschi

Head of the Indian Art Department

---

## ISLAMIC ART

info@islamic.marcopoloauctions.com

### Aila Santi

Head of the Islamic Art Department

## DECORATIVE ARTS

info@decorative.marcopoloauctions.com

### **Manfredi Rovella**

Head of the Decorative Arts Department

m.rovella@marcopoloauctions.com

### **Evelina Scalia**

Interiors Auctions Responsible

---

## TRIBAL ART

info@tribal.marcopoloauctions.com

### **Mario Lupo**

Head of the Tribal Art Department

---

## WUNDERKAMMER & OBJETS DE VERTU

info@wunderkammer.marcopoloauctions.com

### **Blerjan Gjergji**

Head of the Wunderkammer & Objets de Vertu Department

---

## FINE CLOCKS AND HISTORICAL TIMEPIECES

info@clocks.marcopoloauctions.com

### **Fabio Santarelli**

Head of the Fine Clocks and Historical Timepieces Department

---

## DESIGN

info@design.marcopoloauctions.com

### **Simone Andrea Chiara**

Head of the Design Department

---

## VINTAGE & LUXURY

info@vintageandluxury.marcopoloauctions.com

### **Veronica Maria Piras**

Head of the Vintage & Luxury Department



336

**TWO TURQUOISE FIGURES, China,  
first half of the 20th century**

h tot. cm 11,7

€ 300 / 500

Depicting ladies.  
民国 绿松石雕刻人物摆件



337

**TWO TURQUOISE FIGURES, China,  
first half of the 20th century**

h tot. cm 7,7

€ 300 / 500

Depicting sages.  
民国 绿松石雕刻罗汉造像



338

**A TURQUOISE CARVING, China,  
20th century**

h cm 10,5

€ 300 / 500

Depicting a naturalistic landscape where a sage and a child converse beside a flowering rock, inhabited by cats and birds.  
20世纪 绿松石摆件

339

TWO TURQUOISE SCULPTURES, China,  
20th century

The larger h cm 13

€ 500 / 800

Depicting a Pho dog and a ring-handled lidded vase, finely carved with a scene of a child playing with a mythical creature.

20世纪 绿松石摆件一组两件



340

A MALACHITE VASE, China,  
20th century

h cm 13,5

€ 200 / 300

Carved with flowers.

20世纪 孔雀石高浮雕花卉纹盖瓶



341

A MALACHITE VASE, China,  
20th century

h cm 17

€ 300 / 500

Carved with floral motifs covering the entire body.

20世纪 孔雀石雕花卉盖瓶摆件





342

A TIGER EYE FIGURE OF BUDDHA, China,  
20th century

h cm 13

€ 250 / 350

Seated on a double lotus throne, it rests on a carved wooden stand in the form of a double lotus blossom.

20世纪 虎睛石雕刻的释迦牟尼佛坐像



343

A SOAPSTONE SEAL, China,  
Qing dynasty (1644-1911)

h cm 8,5

€ 300 / 500

Carved depicting a qilin among clouds.  
清(1644-1911) 一枚寿山石古兽钮方章



344

ELEVEN SILVER METAL AND HARDSTONE  
BANGLES, China,  
20th century

d max cm 9

€ 200 / 300

20世纪 民国时期的手镯十一个

345

TWO JADE MEDALLIONS, China,  
19th/20th century

d cm 5,5

€ 300 / 500

Pierced and decorated, depicting a Buddhist object and a man on horseback.  
19/20世纪 和田白玉镂空透雕佩饰



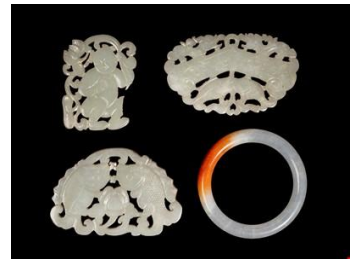
346

FOUR JADE CARVINGS, China,  
19th/20th century

l max cm 9

€ 300 / 500

Three pierced in the form of Buddhist objects and a boy, and a bracelet with a russet stain.  
晚清民国 三件玉佩与翡翠手镯



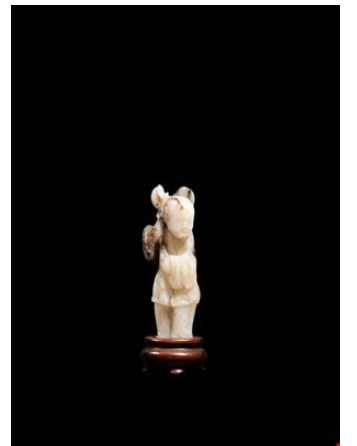
347

A MOTTLED JADE CARVING OF A FIGURE, China,  
19th/20th century

h cm 6,7

€ 300 / 500

In the form of a boy holding a flower.  
清17/18世纪 圆雕持荷(莲)玉童子





348

A JADE FIGURE, China,  
20th century

h cm 5,5

€ 200 / 300

20世纪 圆雕玉猴手把件



349

A JADE CARVING , China,  
20th century

h cm 6

€ 400 / 600

20世纪 透雕竹节玉佩



350

A PAIR OF JADE CARVING, China,  
20th century

h cm 6,2

€ 500 / 700

Pierced representing boys.

20世纪 青白玉透雕寿星人物对佩

351

A WOOD AND JADE NECKLACE, China,  
20th century

l cm 16

€ 300 / 500

20世纪 玉雕花珠配核雕罗汉手串



352

A SILVER AND ENAMEL DOUBLE GOURD SNUFF  
BOTTLE, China,  
early 20th century

h cm 6,6

€ 100 / 200

Finely decorated on both sides with a naturalistic landscape depicting a tree and a bird against a pale blue ground. The neck is encircled by a band of ruyi motifs, while the stopper is adorned with hardstones and surmounted by a turquoise.

民国 银胎珐琅鼻烟壶



353

SIX GLASS SNUFF BOTTLES, China,  
20th century

h max cm 9

€ 100 / 200

One in overlay glass and five painted on the interior.

20世纪 六件鼻烟壶(包含内画壶与套料鼻烟壶)



354

A PAIR OF FAMILLE ROSE PORCELAIN 'HUNDRED DEERS' HAT STANDS, China, 19th/20th century



h cm 28,5

€ 1200 / 1500

19/20世纪 粉彩“百禄图”镂空帽筒(一对)

355

A ROBIN'S EGG PORCELAIN BRUSH WASHER, China, late 19th / early 20 century



h cm 4 x l cm 5,5

€ 300 / 500

Square in section, decorated with a turquoise glaze and a small raised dragon.  
晚清民国 炉钧釉螭龙纹四方水盂

356

A CLAIR-DE-LUNE-GLAZED PORCELAIN CONG VASE, China, Qing dynasty, 19th century



h cm 20

€ 200 / 300

It is entirely covered with a deep turquoise glaze; the base bears an apocryphal six-character mark in underglaze blue of Yongzheng Emperor within a double circle.  
民国 仿雍正款天蓝釉琮式瓶

357

A FAMILLE ROSE PORCELAIN COVER, China,  
Qing dynasty (1644-1911)

d cm 10,5

€ 200 / 300

Painted on the interior with a sage and attendant in a landscape, and on the exterior with a man and a woman in a garden; the centre of the cover bears the six-character underglaze blue seal mark of the Qianlong Emperor.  
清(1644-1911) 粉彩庭院人物纹碗盖



358

AN IRON-RED PORCELAIN BASIN, China, Qing  
dynasty,  
19th century

h cm 12,5 x d cm 40

€ 100 / 150

Painted on the rim with floral motifs alternating with reserves; at the center, within squared and circular reserves with palace scenes with ambassadors and diplomats.  
清19世纪 矾红人物故事纹大盆



359

A PAIR OF FAMILLE ROSE PORCELAIN VASES,  
China,  
late 19th / early 20th century

h cm 60

€ 300 / 500

Of baluster form, the body is decorated with dense leafy and floral scrolls, interrupted by two large square panels depicting censers adorned with flowers. The upper section of the vase is encircled by a band of geometric motifs alternating with floral reserves, while the neck continues the scrolling decoration of the body, enriched with panels featuring tripod archaic censers.

19/20世纪初 粉彩博古纹花瓶一对



360

A BLUE AND WHITE PORCELAIN BOWL, China,  
Qing dynasty,  
late 19th century



d cm 17,5

€ 400 / 600

Decorated on the exterior with birds in flowering trees, and on the interior with a central shou character surrounded by five bats; the centre of the base bears an apocryphal six-character Kangxi Emperor mark in underglaze blue within a double circle.

清晚期 青花诗文花卉纹碗 底书“大清康熙年制”六字款

361

A BLUE AND WHITE PORCELAIN BOWL, China,  
Qing dynasty,  
late 19th century



d cm 12

€ 100 / 200

Finely decorated with antiquities; the centre of the base bears a four-character underglaze blue mark.

清晚期 青花博古纹碗 底款“若深珍藏”

362

A BLUE AND WHITE PORCELAIN BOWL AND  
COVER, China, Qing dynasty,  
19th century



h cm 24,5

€ 200 / 300

Decorated on the body and cover with antiquities; the finial of the cover is formed as a shou character; the center of the base bears a four-character mark in underglaze blue.

清19世纪 青花博古纹盖罐 底款“东壁图书”

363

A PAIR OF BLUE AND WHITE PORCELAIN  
POTICHES, China,  
19th/20th century

h cm 43

€ 200 / 300

The body is decorated in a continuous scene with fortifications, pagodas, and figures; the cover, set against a ground of prunus blossoms, is decorated with a mountainous landscape featuring trees and pagodas.

19/20世纪 一对青花山水人物纹将军罐



364

A LARGE SANCAI CERAMIC FIGURE OF A  
BACTRIAN CAMEL, China,  
Qing dynasty (1644-1911)

h cm 71 x l cm 64

€ 1500 / 2500

Saddled, it is finely decorated with simulated fur on the neck and legs.  
清(1644-1911) 三彩釉载丝路驼俑



365

A SET OF IMARI PORCELAIN COFFEE-CUPS AND  
SAUCERS AND SUGAR-POT, China, Qing dynasty,  
18th century

The larger h cm 12,8

€ 200 / 300

Five cups with saucers, two sugar bowls, all decorated with floral motifs.  
清18世纪 康熙时期伊万里风格外销茶具一套



366

A CORAL-GROUND FAMILLE ROSE DOUBLE  
LOZENGE PORCELAIN BRUSHPOT, China, Qing  
dynasty,  
18th/19th century



h cm 8,5 x l cm 9,5

€ 300 / 500

With gilt floral motifs and reserves containing landscapes and inscriptions.  
清18/19世纪 珊瑚红描金开光粉彩山水人物诗文双联笔筒

367

A BLUE AND WHITE PORCELAIN VASE, China, Qing  
dynasty,  
Kangxi period (1661–1722)



h cm 22

€ 400 / 600

Decorated with lotus flowers and archaistic motifs between a band of ruyi and one of stylised petals; the base bears a double circle in underglaze blue.  
清康熙 青花“花间寿”纹罐子

368

A FAMILLE ROSE PORCELAIN JARDINIÈRE, China,  
Qing dynasty,  
late 19th century



h cm 35 x d cm 39

€ 500 / 700

Decorated on a swastika-pattern ground with two large reserves painted with birds and flowers, and four smaller reserves with flowers. The base is pierced with a hole for water drainage.

清晚期 粉彩万字开光花鸟纹花盆

369

A POWDER BLUE PORCELAIN SPRINKLER, China,  
Qing dynasty,  
19th century

h cm 31

€ 400 / 600

Decorated on a blue ground with gilded floral motifs and reserves containing flowering trees and birds.

清19世纪 洒蓝釉开光五彩花鸟纹葫芦形锥把瓶



370

A PAIR OF FAMILLE VERTE PORCELAIN  
BALUSTER-SHAPED VASES, China, Qing dynasty,  
19th century

h cm 37

€ 400 / 600

The body and neck are decorated with reserved panels enclosing flowers and butterflies, alternating with ruyi motifs. The base is painted with two concentric circles in underglaze blue.

清19世纪 五彩开光花卉纹观音瓶



371

A FAHUA PORCELAIN VASE, China,  
19th/20th century

h cm 20

€ 400 / 600

Decorated with grapevine scrolls and flowers.

19/20世纪 孔雀蓝地珐华葡萄纹罐



372

A PAIR OF FAMILLE VERTE POTICHES, China,  
late 19th/early 20 century



h cm 36

€ 300 / 500

Decorated with floral medallions on an aquamarine ground with flowers and butterflies.  
晚清民国 五彩开光花卉纹将军罐一对

373

A FAMILLE VERTE PORCELAIN FISH-BOWL, China,  
Qing dynasty,  
late 19th century



h cm 34,5 x d cm 41

€ 500 / 700

Decorated on the exterior on a yellow ground with floral motifs and reserves containing figures on horseback; the interior is painted with goldfish.  
清晚期 黄地粉彩开光刀马人物纹内画鱼藻纹大缸

374

THREE BLUE AND WHITE PORCELAIN CUPS,  
China,  
Qing dynasty (1644-1911)



h max cm 5

€ 200 / 300

A pair decorated with floral motifs, one of square section decorated on each face with alternating clouds and landscapes, marked on the base.  
清 (1644-1911) 三件青花杯(成对花鸟杯+山水方杯)

375

A FAMILLE ROSE PORCELAIN BOWL , China,  
Republic period (1912–1949)

d cm 13,5

€ 100 / 200

Decorated with a rooster among lotus and peony flowers. The base bears the Fù Guì Cháng Chūn (富貴長春) four-character mark in overglaze red.  
民国 粉彩“官上加官”纹碗



376

A BLUE AND WHITE PORCELAIN DISH, China, Qing  
dynasty,  
19th century

d cm 24

€ 100 / 150

清晚期 青花“三星高照”纹盘



377

A BLUE AND WHITE PORCELAIN, China, Qing  
dynasty,  
19th century

l cm 34 x w cm 27

€ 100 / 150

清19世纪 青花“通景山水”纹椭圆盘



378



A BLUE AND WHITE PORCELAIN VASE, China, Qing dynasty,  
late 19th century

h cm 26

€ 100 / 200

清晚期 青花冰梅纹花瓶

379



A BLUE AND WHITE PORCELAIN BOTTLE-SHAPED  
VASE, China, Qing dynasty,  
19th century

h cm 33

€ 500 / 700

With a raised foot, compressed globular body, and tall tubular neck, it is decorated with floral and foliate scrolls.

清19世纪 青花淡描缠枝花卉纹长颈瓶

380



A FAMILLE ROSE MILLE FLEURS PORCELAIN  
JURENTANG DISH, China,  
Republic Period (1912-1949)

d cm 24

€ 150 / 250

Finely painted on a black ground with luxuriant peonies and flowers; the base bears the iron-red Ju Ren Tang Zhi mark.

民国时期 墨地粉彩署“百花不落地”盘 署“居仁堂制”款

381

TWO PORCELAIN DISHES AND A CUP , China,  
second half of 20th century

d max cm 17,5

€ 500 / 700

建国初期 一组仿乾隆款薄胎粉彩瓷器



382

A BLUE AND WHITE PORCELAIN BRUSHPOT  
BITONG, China,  
19th/20th century

h cm 14,5 x d cm 19

€ 300 / 500

清19/20世纪 青花“三国题材”故事纹大笔筒



383

A SMALL BLUE AND WHITE PORCELAIN PASE,  
China, Qing dynasty,  
19th century

h cm 13,5

€ 250 / 350

Decorated with birds and flowers.

清19世纪 青花“锦鸡牡丹纹”罐子



384

A SHIWAN FIGURE OF A RECUMBENT DEER, China,  
20th century



l cm 14

€ 500 / 700

Finely modelled and incised, realistically simulating fur.  
20世纪 石湾窑仿生鹿摆件

385

A SHIWAN FIGURE OF A BEAR, China,  
20th century



h cm 25

€ 500 / 700

Depicted standing upright on a rock.  
20世纪 石湾窑立熊摆件

386

A SHIWAN FIGURE OF A LION, China,  
20th century



h cm 16,5 x l cm 22

€ 500 / 700

Depicted fiercely fighting with a serpent upon a rock.  
20世纪《狮蛇斗》石湾窑摆件

387

A SHIWAN FIGURE OF A TIGER, China,  
20th century

h cm 21 x l cm 33

€ 500 / 700

Depicted roaring with a matte finish, standing on a flambé-glazed base in tones of white, blue, and beige.

20世纪 石湾窑猛虎下山摆件



388

A SHIWAN FIGURE OF AN HAWK, China,  
20th century

h cm 18

€ 500 / 700

Shown grappling with a cobra upon a rocky outcrop; the feathers and scales are incised on the biscuit body and applied with 'pearls' of white enamel across the wings and shoulders.

20世纪 石湾窑雄鹰捕蛇摆件



389

TWO BLUE AND WHITE PORCELAIN VASES ON  
CELADON GROUND, China, Qing dynasty,  
19th century

The larger h cm 59,5

€ 200 / 300

Of baluster column form, one is decorated with flower vases and Taoist objects, the other with sages in a garden on a celadon ground; the necks feature handles shaped as pho dogs.

清19世纪 豆青釉青花三星祝寿/博古纹双耳大瓶(两只)



390

A BLUE AND WHITE PORCELAIN GINGER VASE,  
China,  
Qing dynasty (1644-1911)



h cm 11

€ 100 / 150

Decorated around the body, without interruption, with a scene depicting a pond with a flower vase and ducks.

清代 青花“一路连科”(莲池鸳鸯)纹罐

391

FIVE BLUE AND WHITE PORCELAIN DISHES,  
China, Qing dynasty,  
18th century



The larger d cm 27,5

€ 300 / 500

Decorated with pagodas, butterflies, carp, floral motifs, and leafy patterns.

清18世纪 青花瓷盘一组五个

392

A PAIR OF BLUE AND WHITE PORCELAIN DISHES,  
China, Qing dynasty,  
18th century



d cm 20

€ 100 / 200

Decorated on the rim and body with panels containing floral designs.

清18世纪 青花花卉纹对盘

393

A LARGE BLANC-DE-CHINE FIGURE, China,  
20th century

h cm 40

€ 100 / 200

Depicting a lady holding a vase of flowers, mounted in bronze.  
20世纪 德化窑白釉麻姑献寿立像(带鎏金铜底座)



394

SEVEN BLANC-DE-CHINE PORCELAIN FIGURES,  
China,  
20th century

h max 60

€ 200 / 300

Depicting three Guanyin, two of whom are crowned, a Budai, a luohan, and two attendants.  
20世纪 一组德化窑白釉瓷塑造像



395

A LARGE FLAMBÉ PORCELAIN VASE, China,  
20th century

h cm 63

€ 100 / 200

Column-shaped like a balustrade, it is entirely covered with a red glaze with purple streaks.  
20世纪 窑变釉花瓶



396

FOUR WOODEN AND FAMILLE ROSE PORCELAIN  
PANELS , China,  
Republic period (1912–1949)

h cm 106,5 x l cm 26

€ 400 / 600

Each decorated with three plaques: the upper, fan-shaped, and the lower, rectangular, bear inscriptions, while the central plaque is decorated with lakeside landscapes featuring pagodas, boats, trees, and mountains.

民国 粉彩山水诗文瓷板画四条挂屏



397

TWO LARGE SANG-DE-BOEUF PORCELAIN  
BALUSTER-SHAPED VASES, China, Qing dynasty,  
19th century

h cm 59

€ 1800 / 2200

Entirely covered with a fine iron-red glaze.

清19世纪 红釉大瓶两只



398

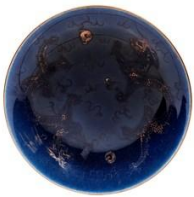
A GILT-POWDER BLUE PORCELAIN DISH, China,  
Qing dynasty (1644–1911)

d cm 20,5

€ 100 / 150

Blue ground with two gilt dragons; the centre of the base bears a six-character seal mark in underglaze blue.

清 (1644-1911) 乾隆款霁蓝釉描金龙纹盘



399

A SANG-DE-BOEUF PORCELAIN BOTTLE-SHAPED  
VASE, China,  
early 20th century

h cm 39

€ 500 / 700

With a raised foot, globular body, and tall flaring neck with an everted rim, it is entirely covered with a glaze that fades from celadon at the mouth into a deep red colour.

民国 窑变红釉撇口赏瓶



400

A SANG-DE-BOEUF PORCELAIN VASE, China,  
late 19th/early 20 century

h cm 55

€ 200 / 300

With a raised waisted foot, cylindrical body, and short flaring neck, it is entirely covered with a red glaze.

晚清民国 红釉棒槌瓶



401

A PORCELAIN YOUZHOU BOWL, China,  
Song dynasty (960-1279)

d cm 14,7

€ 250 / 300

Carved with flowers.

宋(960-1279年)耀州窑刻花碗





402

A PAIR OF SANCAI GLAZE CERAMIC VASES, China,  
20th century

h cm 42,5

€ 400 / 600

Shaped like Koi carp, they are enamelled in shades of green, brown, and yellow.  
20世纪 素三彩(琉璃釉)鱼形花插一对



403

A PORCELAIN INK-STONE, China, Qing dynasty,  
19th century

d cm 12

€ 300 / 500

Modelled in the shape of a leafy peach.  
清19世纪 仿生瓷桃形盖盒



404

PAIR OF FAMILLE ROSE EROTIC PORCELAIN  
DISHES, China,  
Republic Period (1912-1949)

d cm 10

€ 300 / 500

Well painted, the rims decorated with a band of honeycomb-pattern motifs and the centers featuring erotic scenes. The bases bear a four-character overglaze mark Chūn Yí Táng Zhì  
春怡堂製。  
民国 春怡堂製小盘一对

405

THREE FAMILLE ROSE PORCELAIN BUDAI, China,  
20th century

The larger h cm 20

€ 300 / 500

Depicted in the classic seated position with smiling faces and robes decorated with floral motifs, while holding a prayer necklace.

20世纪 三尊粉彩弥勒佛瓷塑坐像



406

A CANTON 'ROSE MEDALLION' PORCELAIN VASE ,  
China, Qing dynasty,  
19th century

The vase h cm 36

€ 300 / 500

Of bottle form, it is decorated with two large reserves depicting palace scenes, floral motifs with Taoist objects, and a polychrome relief qilong on the neck.

清19世纪 广彩螭龙人物纹长颈瓶(改台灯)



407

A FAMILLE ROSE PORCELAIN FLOWER POT WITH  
STAND, China, Qing dynasty,  
19th century

h tot cm 20

€ 300 / 500

Painted with lotus flowers, bats, and auspicious symbols amid leafy sprays on a yellow ground; the base in porcelain with floral decorations.

清19世纪 黄地粉彩缠枝花卉寿字纹八方带托花盆



408

A FAMILLE ROSE 'BO GU' PORCELAIN VASE, China,  
Qing dynasty,  
late 19th century



h cm 45

€ 200 / 300

Baluster-shaped column, with the body painted on a blue ground between two ruyi bands, depicting the "Hundred Antiquities." The neck, with two handles, is painted on a pink ground with lotus flowers and leafy branches.

清晚期 松石绿地粉彩博古纹螭龙耳盘口瓶

409

A FAMILLE ROSE PORCELAIN HIGH-FOOTED  
BOWL, China,  
Tongzhi (1861-1875) mark and period



h cm 8 x l cm 18

€ 100 / 200

Decorated with a tree-filled courtyard featuring figures of sages and ladies, surmounted by a band painted with bats and floral motifs. The base bears the overglaze red seal mark of the Tongzhi Emperor.

清同治 粉彩内松石绿釉人物四方倭角供碗

410

TWO CANTON 'ROSE MEDALLION' BOWLS, China,  
Qing dynasty,  
19th century



d max cm 27,5

€ 150 / 250

Decorated inside and out with floral motifs and butterflies, and with medallion-shaped panels depicting scenes of palace life.

清19世纪 广彩开光庭院人物纹大碗

411

A FAMILLE ROSE PORCELAIN VASE, China,  
20th century

h cm 40,5

€ 400 / 600

Columnar in baluster shape, finely painted in a continuous scene of children playing in a tree-filled courtyard. The neck is decorated with floral motifs and stylized leaves and features two handles shaped as qilong. The base bears a red iron mark reading Lin Zhi Cheng Xiang.  
20世纪 粉彩“婴戏图”双耳瓶，底款为“麟趾呈祥”



412

A PAIR OF FAMILLE ROSE PORCELAIN CUPS,  
China,  
20th century

h cm 6,8 x d cm 11,3

€ 400 / 600

Decorated with floral motifs; at the base, bearing an apocryphal Daoguang Emperor mark.  
With wooden stands.  
20世纪 粉彩花卉纹杯(一对)款: 矾红篆书“大清道光年制”六字三行款



413

A FAMILLE ROSE PORCELAIN TEA CADDY, China,  
Qing dynasty,  
18th century

h cm 13,5

€ 200 / 300

Decorated on both sides with birds in a floral garden featuring lotus flowers and peonies, and on the top with foliate motifs.  
清十八世纪 粉彩花鸟纹方形茶叶罐



414

A PAIR OF BRONZE AND PORCELAIN  
CHANDELIERS, China, Qing dynasty,  
18th century



h cm 80

€ 400 / 600

Comprising a baluster-column vase below and a trumpet-shaped vase above on a café-au-lait ground with reserves decorated with flowers in famille rose enamels, mounted in bronze with base, joints, and candleholders, probably later.

清18世纪 清雍正/乾隆时期外销瓷改造的欧洲铜鎏金大烛台(一对)

415

A FAMILLE ROSE PORCELAIN HAT STAND, China,  
Qing dynasty,  
late 19th century



h cm 29,5

€ 150 / 250

Decorated with roosters among rocks and flowers.

清晚期 粉彩“官上加官”纹开窗帽筒

416

A FAMILLE VERTE PORCELAIN UMBRELLA STAND,  
China,  
20th century



h cm 59,5

€ 100 / 200

Cylindrical in shape, it is continuously decorated with phoenices in a naturalistic landscape featuring rocks, flowers, trees, and butterflies. The upper rim is decorated with panels showing objects from Taoist tradition, interspersed with flowers among geometric motifs.

20世纪 五彩“凤穿牡丹”纹箭筒

417

A PAIR OF FAMILLE ROSE PORCELAIN  
GINGER-JARS, China,  
late 19th/early 20 century

h cm 22

€ 600 / 800

Of globular form with a spherical knob finial, they are enamelled with large butterflies and frogs resting on cabbage leaves.

清晚期 粉彩白菜纹(百财)盖罐(一对)



418

A 'ROSE MEDALLION' CANTON PORCELAIN  
UMBRELLA HOLDER, China,  
first half of the 20th century

h cm 56,5

€ 500 / 800

Of cylindrical form, it is painted in three sections, separated by a decorative band of cartouches enriched with floral motifs; the decoration is animated by butterflies in flight among lush cabbage leaves.

民国 广彩白菜纹箭筒(伞筒)



419

A PAIR OF FAMILLE ROSE PORCELAIN VASES,  
China,  
early 20th century

h cm 43

€ 100 / 150

民国 粉彩博古纹狮耳瓶(一对)





420

A YELLOW-GROUND PORCELAIN DISH, China,  
late 19th/early 20 century

d cm 25,5

€ 100 / 150

Decorated on the exterior on a yellow ground with clouds and Chinese characters; the centre of the base bears an apocryphal six-character Qianlong mark in iron red.

清晚期 晚清仿乾隆款黄地粉彩“万寿无疆”纹盘



421

A FAMILLE ROSE PORCELAIN CACHEPOT, China,  
20th century

h cm 47,5 x d cm 50

€ 500 / 800

Decorated on the exterior with bunches of grapes on a lime-green ground, and on the interior with flowering branches.

20世纪 松石绿地粉彩葡萄纹大画缸



422

FOUR PORCELAIN CUPS, China, Qing dynasty,  
18th-19th century

The larger h cm 8,5

€ 300 / 500

Two with Imari enamels decorated with floral motifs, one with gilt inscriptions and at the centre a four-character iron-red Daoguang mark, one in doucai enamels decorated with the “Eight Drunken Immortals” with inscriptions and a six-character underglaze blue Kangxi mark, mounted in silver.

清18至19世纪 四件清代瓷杯

423

A PAIR OF FAMILLE ROSE ROULEAU VASES, China,  
late 19th/early 20 century

h cm 57

€ 600 / 800

Decorated with vases of flowers and inscriptions.  
晚清民国 粉彩博古诗文花卉纹棒槌瓶(一对)



424

A PAIR OF FAMILLE ROSE VASES AND A CELADON  
VASE MOUNTED AS A LAMP, China,  
20th century

The larger h cm 47

€ 400 / 600

20世纪 一对粉彩仕女图小瓶和一件青瓷瓶配鎏金铜件改台灯



425

A PAIR OF FAMILLE ROSE BOTTLE-SHAPED  
PORCELAIN VASES, China,  
20th century

h cm 41

€ 1200 / 1500

20世纪 “洪宪年制”款粉彩三多纹天球瓶(一对)



426

A FAMILLE ROSE PORCELAIN HIGH-FOOTED  
BOWL, China,  
Tongzhi (1861-1875) mark and period



h cm 7,5 x l cm 17,5 x p cm 18

€ 100 / 150

Of quadrilobate section, it is enamelled in turquoise on the interior and exterior; each face is decorated with a reserve containing a fish on a honeycomb-pattern ground; the turquoise base bears a six-character iron-red mark of the Tongzhi Emperor.

清同治 粉彩锦地开光鱼藻纹倭角方碗

427

A SHUICAI PORCELAIN BALUSTER-SHAPED VASE,  
China,  
Republic period (1912-1949)



h cm 41,5

€ 300 / 500

It is painted on the body with a sage in a landscape with attendants holding a peach; it bears inscriptions.

民国 粉彩“仙翁献寿”纹双耳瓶

428

A PAIR OF WUCAI PORCELAIN POTICHES, China,  
20th century



€ 400 / 500

Decorated on the body and on the lid with horses, large leaves and Buddhist objects.

20世纪 青花五彩将军罐(一对)

429

A FAMILLE ROSE PORCELAIN DISH, China,  
Republic period (1912–1949)

d cm 23

€ 100 / 200

Decorated with horsemen and floral motifs; the centre of the base bears an impressed apocryphal six-character Qianlong mark.

民国 仿乾隆款粉彩人物故事纹盘



430

TWO LARGE CANTON PORCELAIN CHARGER,  
China, Qing dynasty,  
19th century

The larger d cm 42

€ 300 / 500

Decorated with palace scenes featuring dignitaries, attendants, and warriors; the rims are painted with floral motifs and reserves. One of the two plates bears a four-character apocryphal Qianlong Emperor mark in overglaze red.

清19世纪 广彩戏曲人物纹瓷盘



431

A LARGE 'ROSE MEDALLION' CANTON PORCELAIN  
BOWL, China, Qing dynasty,  
19th century

d cm 40

€ 100 / 150

Decorated on the interior with butterflies, flowers, small birds, and lobed reserves containing palace scenes with sages.

19世纪 广彩开光人物花鸟纹大碗





432

A PAIR OF FAMILLE ROSE PORCELAIN PLAQUES,  
China,  
20th century

h cm 79 x 20

€ 800 / 1200

Depicting naturalistic landscapes with figures, pagodas, and mountains. They bear poetic inscriptions and a seal of Zhang Peixuan. Set within wooden frames.

20世纪 粉彩青绿山水人物诗文瓷板挂屏(一对)



433

A FAMILLE ROSE PORCELAIN HATSTAND, China,  
Republic period (1912-1949)

h cm 27,5

€ 300 / 500

Continuously painted with pomegranate trees among rocks and peonies. The base bears a six-character apocryphal impressed red mark of the Daoguang Emperor.

民国 粉彩“三多纹”帽筒 底款“大清道光年制”



434

A YELLOW-GROUND FAMILLE ROSE PORCELAIN  
JARDINIÈRE, China, Qing dynasty,  
late 19th century

h cm 35 x d cm 40,5

€ 500 / 700

Decorated with a dragon and a phoenix among blossoming peonies; the base is pierced with a hole for water drainage.

清晚期 黄地粉彩龙凤呈祥穿花牡丹纹花盆

435

A FAMILLE ROSE PORCELAIN VASE, China,  
19th/20th century

h cm 45,5

€ 300 / 500

Of rouleau form, it is decorated on the body and neck with the Eighteen Luohan; the base is decorated with a double circle in underglaze blue.

晚清民国 粉彩十八罗汉纹棒槌瓶



436

A SHUICAI PORCELAIN PLAQUE, China,  
Republic Period (1912–1949)

h cm 34 x l cm 33,5

€ 500 / 800

Depicting the sage Shoulao meeting his disciple, who presents him with the peach of longevity, followed by a procession of figures in a tree-filled courtyard among mountains, with rocks, bats, and trees; bears an inscription.

民国 粉彩瓷板“大富贵亦寿考”



437

A FAMILLE ROSE PORCELAIN BOWL, China,  
Republic Period (1912–1949)

d cm 11,5

€ 100 / 150

Decorated with butterflies among latticework and Buddha's hands. The base bears a four-character apocryphal mark of the Qianlong Emperor.

民国 粉彩瓜蝶纹碗



438

A PORCELAIN BRUSHPOT, Cihna,  
20th/21st century



h cm 28,5

€ 500 / 700

Depicting carp among seaweed; it bears inscriptions.  
20世纪 粉彩鱼藻纹帽筒

439

A PAIR OF FAMILLE ROSE PORCELAIN  
JARDINIERES AND STANDS, China,  
20th century



h cm 9,5

€ 300 / 500

Of hexagonal section, they are decorated with small birds among flowering branches; the planters are pierced at the base for water drainage; the bases bear an impressed four-character Qianlong mark within a square.  
20世纪 粉彩花鸟纹八方花盆(成对带托)

440

A LARGE DISH AND SEVEN FAMILLE ROSE  
PORCELAIN DISHES, China-Europe,  
18th-19th century



d max cm 40

€ 200 / 300

The large one European; all decorated with floral motifs.  
18/19世纪 外销粉彩花卉纹盘

441

A FAMILLE ROSE HU-SHAPED VASE, China,  
20th century

h cm 16,5

€ 500 / 700

Decorated with flowers and birds; the base bears an apocryphal four-character Qianlong mark in overglaze blue.

20世纪 民国“洪宪御制”款粉彩花鸟纹双耳瓶



442

TWO BLUE AND WHITE PORCELAIN 'KRAAK'  
DISHES, China, Ming dynasty,  
Wanli period (1572-1620)

d cm 21,5

€ 150 / 250

Lobed in shape, they feature at the center a bird perched on a rock within a floral landscape, with the rim decorated with reserves enclosing Buddhist objects.

明万历年 青花克拉克花鸟纹对盘



443

A BLUE AND WHITE 'KRAAK' PORCELAIN DISH,  
China, Ming dynasty,  
Wanli period (1572-1620)

d cm 20,5

€ 150 / 250

Lobed in shape, with the rim decorated with panels containing floral motifs and the center depicting a bird among flowers.

明万历年 青花克拉克花鸟纹盘





444

**A PAIR OF BLUE AND WHITE PORCELAIN DISHES,  
China, Qing dynasty,  
18th century**

d cm 28

€ 150 / 250

Finely decorated with birds among pagodas and peony flowers, the rim adorned with lobed panels containing bamboo and pine leaves.

清18世纪 青花花鸟庭院纹对盘



445

**A PAIR OF LARGE CLOISONNÉ VASES, China,  
20th century**

h cm 64,5

€ 400 / 600

They are decorated at the centre with two kirin, and on the neck with bats among stylised clouds, acanthus leaves, and ruyi motifs; both vases are further embellished with relief decoration of flowering scrolls and pomegranates.

20世纪 铜胎掐丝珐琅瑞兽纹石榴耳赏瓶一对



446

**A CLOISONNÉ VASE MOUNTED AS A LAMP,  
China,  
early 20th century**

h cm 26

€ 200 / 300

Decorated with floral motifs, geometric patterns and ruyi.

20世纪初 景泰蓝瓶台灯

447

**A PAIR OF CLOISSONNÉ BALUSTER-SHAPED  
VASES, China,  
first half of the 20th century**

h cm 41

€ 400 / 600

With two handles and decorated on a yellow ground with bats, qilong, lotus flowers, and geometric motifs.

20世纪初 景泰蓝黄地缠枝莲纹双耳方瓶一对



448

**A PAIR OF CLOISSONNÉ ENAMEL FRAMES, China,  
Qing dynasty,  
late 19th century**

h cm 40,2 x l cm 28,5

€ 1000 / 1500

Enamelled with refined floral motifs and leafy ramages, each frame is centered by a polylobed reserve.

清晚期 景泰蓝相框一对



449

**AN ENAMEL ON COPPER EWER, China,  
20th century**

h cm 24

€ 500 / 800

Decorato sul corpo con fondo giallo e volute di loto, presenta due grandi medaglioni contenenti motivi floreali.

20世纪 铜胎画珐琅黄地开光牡丹玉兰纹执壶





450

AN ENAMEL ON COPPER DISH, China,  
Qing dynasty (1644-1911)

d cm 33,5

€ 100 / 200

Decorated with flowers.  
清(1644-1911) 铜胎画珐琅百花纹盘



451

THREE BRONZE TRIPOD-CENSERS, China,  
Qing dynasty (1644-1911)

d cm 15,5

€ 800 / 1200

The center of the base bears an apocryphal six-character Xuande Emperor mark.  
清(1644-1911) 仿宣德风格的铜香炉 底款“大明宣德年制”楷书款



452

A BRONZE TRIPOD-CENSER, China, Qing dynasty,  
19th century

h cm 47

€ 500 / 700

With handles in the form of ruyi clouds, the finial of the cover is shaped as a lion.  
清19世纪 铜制狮钮云纹三足香薰炉

453

A CLOISONNÉ FIGURE, China,  
20th century

h cm 59

€ 100 / 200

Depicting a seated bodhisattva.  
20世纪 铜胎景泰蓝绿度母造像



454

A BRONZE FIGURE, China,  
20th century

h cm 19

€ 500 / 700

Depicting a deity seated on a double lotus-flower base.  
20世纪 铜制菩萨坐像



455

A BRONZE FIGURE, China,  
20th century

h cm 28

€ 250 / 350

Depicting a seated Buddhist deity.  
20世纪 绿度母铜坐像



456

A GILT-BRONZE FIGURE OF YAMA DHARMARAJA,  
China,  
19th/20th century



h cm 17 x l cm 9,5

€ 250 / 350

清19/20世纪 铜制阎魔敌造像

457

THREE GILT BRONZE SCULPTURES,  
China-Thailand,  
20th century



The larger h cm 46,5

€ 100 / 150

Depicting a Thai Buddha in Rattanakosin style seated on a throne, accompanied by two bodhisattvas.

20世纪 铜鎏金佛像三尊

458

A BRONZE FIGURE, China,  
Ming dynasty (1368-1644)



h cm 21,5

€ 300 / 500

Depicting a standing man holding a scroll.

明(1368-1644) 一尊铜制文官造像

459

A BRASS VAJRA, Tibet,  
19/20th century

l cm 17

€ 300 / 500

19/20世纪 藏传铜金刚杵



460

A PAIR OF BRONZE INCENSE-BURNER, China,  
Qing dynasty (1644-1911)

h cm 30

€ 100 / 150

Modelled in the form of a duck resting on a lotus leaf.  
清 (1644-1911) 铜制鸭形香薰 (一对)



461

A BRONZE TRIPOD CENSER, China, Qing dynasty,  
19th century

h cm 12,5 x l cm 17

€ 800 / 1200

At the base, bearing an apocryphal Xuande Emperor mark.  
清19世纪 仿宣德款桥耳三足铜香炉



462

A BRONZE RITUAL YI EWER, China,  
Ming dynasty or later

h cm 14,5 x l cm 29

€ 350 / 450

Raised on four feet cast with archaic scrolling motifs, the curved body decorated with geometric patterns and terminating in a U-shaped spout, the handle formed as a two-horned dragon with spiky mane and coiled tail. The interior bears a three-character inscription.  
明代或之后 青铜匜



463

A LARGE BRONZE SCULPTURE, China,  
20th century

h cm 81

€ 400 / 600

Depicts a Luohan seated in a meditative pose.  
20世纪 铜铸达摩祖师坐像



464

A SILVER-INLAID BRONZE PAPER WEIGHT, China,  
Qing dynasty,  
19th century

l cm 11,5

€ 200 / 300

In the shape of an elephant.  
清19世纪 铜雕太平有象镇纸(笔搁)



465

A DARK PATINA BRONZE SCULPTURE, China, Ming  
dynasty,  
17 century

h cm 15,2

€ 300 / 500

Depicting a warrior dressed in ceremonial attire mounted on his horse.  
明17世纪 关公骑马铜像



466

A PAIR OF BRONZE DOOR KNOCKERS , China,  
Qing dynasty (1644-1911)

l cm 16

€ 350 / 450

Shaped like lion heads.  
清(1644-1911)铜制狮首铺首衔环(门环)



467

A PAIR OF LARGE BRONZE CENSERS, China, Qing  
dynasty,  
19th century

h cm 51

€ 300 / 500

Raised on three feet, with the body decorated with taotie masks, ruyi, and floral motifs; they  
feature two large openwork handles with flowers and are surmounted by covers echoing the  
decoration of the body, upon which sit two qilin figures.  
清 19世纪 麒麟盖镂空双耳薰炉一对



468

### THREE BRONZE HU-SHAPED VASES, China, Qing dynasty (1644-1911)



h cm 39

€ 300 / 500

A pair is decorated with a central key-fret band featuring taotie masks, three goats are applied at the base of the neck, while stylized leaves extend from the central band. The other is decorated with taotie masks and geometric motifs and handles in the form of rings held by stylized beast heads.

清(1644-1911) 仿商周青铜礼器风格的铜瓶三件

469

### A BRONZE RITUAL BELL, Himalaya, 19th century



h cm 23

€ 300 / 500

The handle is shaped as a head terminating in a vajra.

喜马拉雅 19世纪 藏传佛教铜制金刚铃

470

### A PAIR OF BRONZE GU VASES, China, Qing dynasty (1644-1911)



h cm 17,5

€ 250 / 350

Decorated with carved taotie masks.

清(1644-1911) 仿古青铜觚式铜花瓶(一对)

471

AN EMBROIDERY ON SILK, China,  
late 19th/early 20 century

h cm 65 x l cm 36

€ 100 / 200

Decorated with floral motifs, butterflies, qilong, and cats.  
晚清民国 绣品



472

A LARGE EMBROIDERY ON BROCADE SILK, China,  
Qing dynasty,  
19th century

h tot cm 157 x l cm 78

€ 300 / 500

Finely embroidered with a dragon and a phoenix in a naturalistic landscape with flowers, bats, and stylized clouds, on a pink floral brocade ground.  
清19世纪 “龙凤呈祥”刺绣挂屏



473

A THANGKA, Himalaya,  
19th/20th century

h cm 56 x l cm 44

€ 200 / 300

喜马拉雅 19/20世纪 藏传佛教题材唐卡





474

A PAINTED WOODEN PANEL, Tibet,  
19th/20th century

h cm 86 x l cm 188

€ 300 / 500

西藏 19/20世纪 藏传佛教风格木板唐卡式装饰画



475

A THANGKA, Himalaya,  
19th/20th century

h cm 60 x l cm 43

€ 200 / 300

喜马拉雅 19/20世纪 佛教“六道轮回图”唐卡



476

A THANGKA, Himalaya,  
20th century

h cm 94 x l cm 66

€ 300 / 500

20世纪 藏传佛教“六臂玛哈嘎拉(大黑天)”唐卡

477

**TWO SILK THANGKA, Himalaya,  
19th/20th century**

h cm 75 x l cm 55

€ 400 / 600

One depicting the Buddha seated in meditation surrounded by his disciples; one depicting Ganesha.

喜马拉雅 19/20世纪 唐卡两幅



478

**A SILK THANGKA OF SHAKYAMUNI BUDDHA,  
Himalaya,  
19th/20th century**

h cm 119 x l cm 77

€ 500 / 700

Depicting Buddha Shakyamuni with attendants.

喜马拉雅 19/20世纪 佛陀天降图唐卡



479

**THREE WOODEN PANELS WITH VERRE-PAINT,  
China,  
Republic of China (1912–1949)**

h cm 129 x l cm 36

€ 500 / 800

The panels are divided into three sections: the lower part depicts elegant flower vases; the central section shows ladies playing and conversing in a palace courtyard; the upper part is decorated with poetic inscriptions.

民国 一套玻璃画仕女图三幅挂屏



480

**TWO PAINTINGS ON SILK, China,  
late 19th/early 20 century**

h cm 93 x l cm 28,5

€ 500 / 700

Finely painted depicting quails among rocks and flowers; they bear inscriptions.  
19/20世纪 一对绢本设色花鸟画



481

**TWO PAINTING ONS ILK, China,  
first half of the 20th century**

h cm 93 x l cm 28,5

€ 500 / 700

Depicting sages with attendants in landscapes; they bear inscriptions.  
20世纪初 一对绢本设色人物故事画



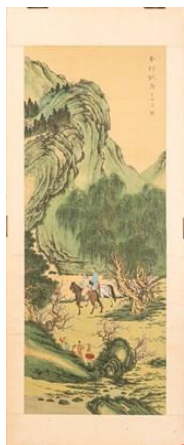
482

**A PAINTING ON SILK, China,  
19th/20th century**

h tot. cm 126 x l cm 51,5

€ 200 / 300

Decorated with horsemen and attendants in a mountainous landscape among trees and rocks; it bears inscriptions.  
19/20世纪 青绿山水人物画 题为《春郊试马图》



483

A PAINTING ON SILK, China,  
Qing dynasty (1644-1911)

h cm 244 x l cm 84,5

€ 2500 / 3500

Depicting a tiger near a rock, with inscriptions above on paper.  
清(1644-1911) 绢本老虎图



484

A LARGE PAINTING ON SILK, China, Qing dynasty,  
19th century

h cm 153 x l cm 66

€ 300 / 500

Depicting a lakeside landscape with pagodas, figures, trees, and mountains. At the upper right it bears a poetic inscription and the artist's seal.  
清19世纪 诗文山水图 绢本



485

PAINTING ON PAPER, China,  
20th century

h cm 80 x l cm 55,5

€ 300 / 500

Depicting two figures with lotus and coins in hands, on the back of the painting depicting two Chinese Scholars.  
画作两幅正反面, 中国, 二十世纪





486

**TWO PAINTINGS ON PAPER, China,  
20th century**

The larger h cm 60 x l cm 118

€ 50 / 100

One painted in watercolour and depicting a lakeside landscape with mountains and pagodas; the other depicting a hen with chicks in a flowering garden.

两幅近现代中国书画作品



487

**TWO PAINTING ON PAPER, China,  
19th/20th century**

The larger h cm 130

€ 200 / 300

Painted with landscapes and inscriptions.

19/20世纪



488

**A LARGE PAINTING ON PAPER, China, Qing  
dynasty,  
19th century**

h cm 168 x l cm 47,5

€ 200 / 300

Depicting a naturalistic landscape with two pheasants perched on a rock in a flowering garden. It bears an inscription and the artist's seal at the upper left.

19世纪 清代花鸟立轴

489

A PAINTING ON PAPER SIGNED BY LUI SHENGFU,  
China,  
19th/20th century

h cm 180 x l cm 44

€ 200 / 300

Depicting a small bird among rocks, flowers, and bamboo leaves; on the left it bears inscriptions, including the signature of the artist Lui Shengfu (蘇笙甫).

19/20世纪 笔意花鸟图立轴设色纸本 题识:「撫李爾熾畫本 蘇笙甫」, 鈐印「李长志印」「荷生」



490

SET OF WHITE TABLE LINENS, China,  
20th century

The larger h cm 150 x l cm 212

€ 50 / 100

20世纪 绣双龙戏珠纹织物



491

A GILT-WOODEN PANEL, China,  
late 19th / early 20 century

h cm 40,5

€ 200 / 300

Depicting a pagoda with a procession of figures arranged across multiple levels.

晚清民国 潮州金漆戏曲人物木雕





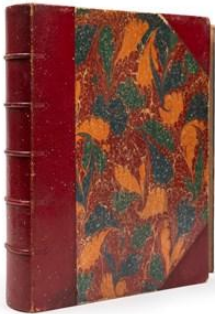
492

**TWO REVERSE-GLASS PAINTING, China,  
19th century**

h cm 42,5 x l cm 31

€ 500 / 600

Representing a lady and a boy.  
清晚期 玻璃画两幅



493

**A ALBUM WITH FRAGMENTS OF SILK, China,  
19th/20th century**

h cm 37 x l cm 29

€ 100 / 200

19/20世纪 《古代裂帖》丝绸纹样册页



494

**A SILK CARPET, China,  
19th/20th century**

l cm 183 x w cm 160

€ 300 / 500

Depicting two peacocks on flowering branches beside a rock.  
清19/20世纪 “孔雀牡丹纹”地毯(或挂毯)

495

A SADDLE, Tibet,  
19th century

h cm 133 x l cm 70

€ 500 / 700

Depicting two dragons holding the flaming pearl.  
西藏 19世纪 清代龙纹马鞍垫



496

**Yidong Wang**  
**(1955 -)**  
**BRIDE IN WAITING, China,**  
**20th century**

h cm 78 x l cm 59

€ 200 / 300

Signed lower right.  
20世纪 当代写实风格画《红衣少女》



497

A WOODEN TABLE, China, Qing dynasty,  
19th century

h cm 28 x l cm 99 x w cm 39

€ 100 / 200

With a rectangular top with plain edge, supported on four square legs.  
清19世纪 清代红木镶瘿木面长方几(炕几/矮几)



498

**GROUP OF CATALOGS,**

The larger h cm 30 x l cm 21

€ 100 / 150

拍卖图录/艺术书籍



499

**GROUP OF CATALOGS,**

The larger h cm 30,5 x l cm 23

€ 100 / 150

拍卖图录/艺术书籍



500

**PAIR OF KUTANI PORCELAIN PLATES, Japan,  
Meiji period (1868–1912)**

d cm 30,5

€ 800 / 1000

At the center of the plates are depicted the Eight Rakan (Arhats), while the rim is decorated with butterflies and floral motifs.



501

**A KUTANI PORCELAIN BOWL, Japan,  
Meiji period (1868–1912)**

d cm 27,5

€ 500 / 700

Painted on the exterior with vibrant floral motifs, pomegranates, and small birds; the interior is centered with female figures in a flowering garden, while the rim harmoniously repeats the exterior decoration. The base bears a Kutani mark.



502

**KUTANI PORCELAIN BOWL, Japan,  
Meiji period (1868–1912)**

d cm 31,5

€ 500 / 800

Painted on the exterior with birds flying among flowering trees, the interior is centered with female figures in a flowering garden, while the rim harmoniously repeats the exterior decoration. The base bears a Kutani mark.



503

**PAIR OF FLARED KUTANI PORCELAIN VASES,  
Japan,  
Meiji period (1868–1912)**

h cm 108

€ 1000 / 1500

Decorated in reserves with warriors and floral motifs.



504



**A LARGE KUTANI TRUMPET-SHAPED PORCELAIN  
VASE, Japan,  
Meiji period (1868–1912)**

h cm 104,5

€ 50 / 100

Decorated with reserves depicting figures in a courtyard, interspersed with luxuriant floral decoration.

505



**A PAIR OF LARGE BLUE AND WHITE CHARGERS,  
Japan,  
Meiji period (1868–1912)**

d cm 46,5

€ 800 / 1200

Richly decorated with a floral landscape, animated by small birds and pheasants among blossoming cherry branches, peonies, and lotus flowers.

506



**AN HEXAGONAL BLUE AND WHITE PORCELAIN  
BASIN, Japan,  
Meiji period (1868–1912)**

h cm 13

€ 100 / 150

It stands on four feet and is decorated with geometric motifs, flowers and clouds; at the centre, a circular reserve depicts a naturalistic landscape.

507

**TWO CARD HOLDERS, Japan,  
early 20th century**

The larger | cm 16

€ 150 / 200

One, of rectangular form, is decorated in gilt with a naturalistic landscape featuring Mount Fuji, pagodas, and boats; the other, of rounded form, is covered in shagreen and enriched with maki-e decoration depicting a vase, a fan, and floral motifs.



508

**A CINNABAR LACQUER SMALL BOX AND COVER,  
Japan,  
19th century**

d cm 7

€ 600 / 700



509

**A WOODEN INRO, Japan,  
Meiji period (1868–1912)**

h cm 4,2

€ 100 / 150

Decorated on one side with the face of an Oni and on the other with two paperweights; the small netsuke is in the form of a purse.



510

LACQUERED WOOD KODANSU , Japan,  
Taisho-Showa (1920-1930)

h 25 cm x l 25 cm x w 18 cm

€ 400 / 600

The front drawers are decorated with cherry trees; the sides and upper section feature floral reserves.



511

THREE EMBROIDERIES ON SILK, Japan,  
20th century

h cm 29 x l cm 31

€ 150 / 250

Depicting a pagoda, a dragon chasing the flaming pearl, and a lady preparing tea.



512

A LARGE BRONZE TRIPOD-CENSER, Vietnam,  
early 20th century

h cm 64 x l cm 54

€ 400 / 600

It is supported on three feet issuing from the mouths of mythical beasts, and has two cloud-shaped handles; the pierced cover is surmounted by a Buddhist lion finial. It rests on its bronze stand.

20世纪初 铜制狮钮云纹三足香薰炉

513

ROCK CRYSTAL BUDDHA, Thailand,  
19th century

h cm 13

€ 300 / 500

Depicted seated in a meditative posture, it features gilding on the robe and head.



514

SAKYAMUNI BUDDHA IN ALABASTER, Burma,  
19th century

h cm 59

€ 1300 / 1500

Seated in the Bhumisparsha mudra position.



515

A LACQUERED-PAPIER-MACHE PANEL, Persia,  
Qajar period,  
19th century

h cm 29 x l cm 21,2

€ 300 / 500

Depicting on the recto a narrative scene likely derived from the Shahnameh (Book of Kings), identifiable as the beheading of Afrasiyab by Kay Khusraw, the emblematic figures of Turan and Iran respectively, in the presence of Rostam, the foremost hero of the Persian epic tradition. Set beside a watercourse within a stylised landscape, the composition draws upon a Persian iconographic repertoire, with references to the stylistic conventions and compositional schemes developed in the Safavid ateliers of the sixteenth century and subsequently reinterpreted during the Qajar period. The reverse depicts a male figure in noble attire with a large feathered turban, holding a small bird in his hand.









MARCOPOLO  
AUCTIONS MILANO